

EVERYONE WELCOME



**ALBANY ROAD
BAPTIST CHURCH**
Everyone Welcome

WELCOME

One of the things we say whenever we gather as a church is:

‘Whether you are here for the first time or the 101st time we want you to feel welcome and at ease among us. We want you to feel like you belong. Please don’t feel that you must join in with anything that you don’t feel comfortable doing. It doesn’t matter if it is the singing; praying or even the offering. Please relax and enjoy the experience of church.’

SO, WELCOME.

This Welcome Sheet has been created for those who are here for the first or almost their first visit. We have tried to include within it those things that we feel will help you feel at home.

If you think there are ways we can improve the sheet or if there are things that would have been helpful to know that are not here do please tell us.

We want to make it as useful as we can.

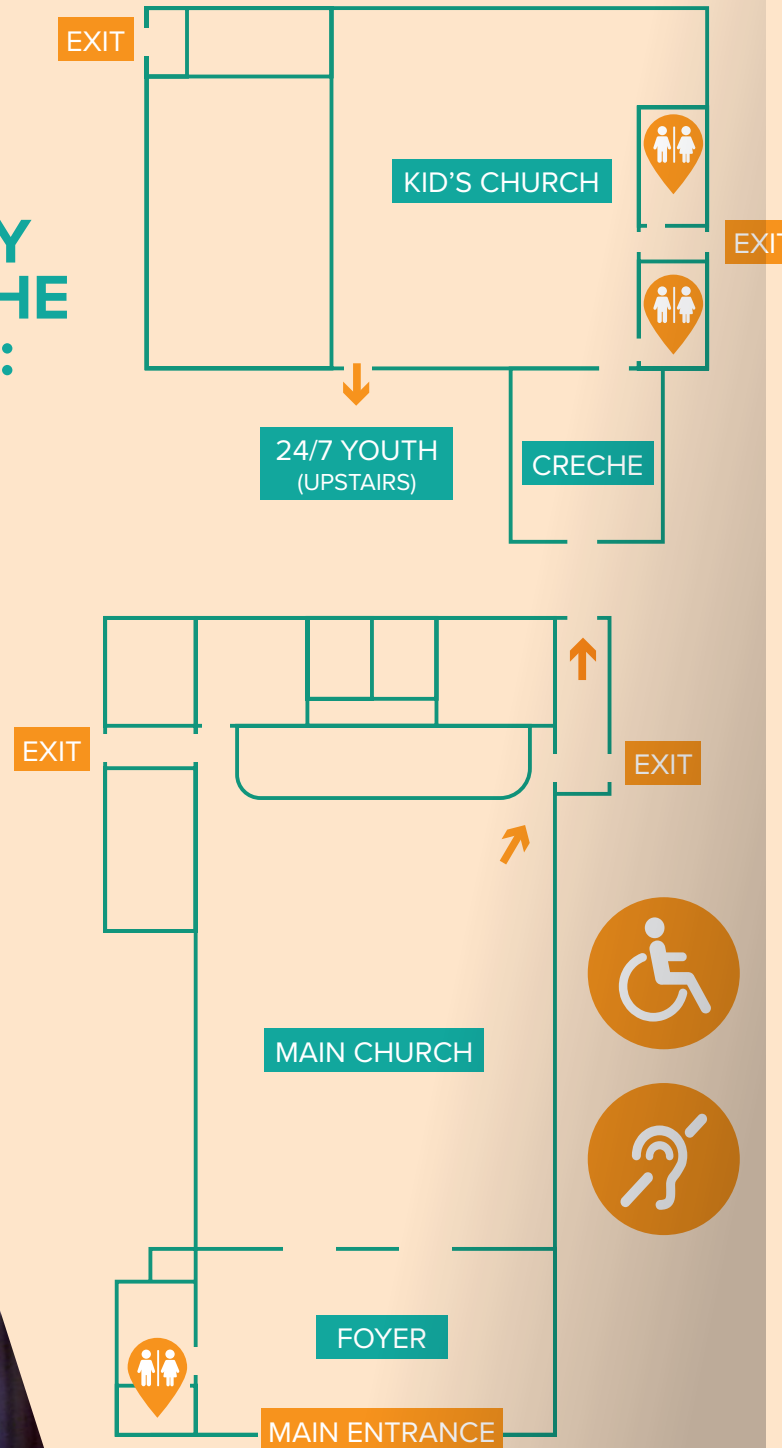
If there is anything we can do to make your visit better, please do not hesitate to ask a Steward or at the Welcome Desk in the Foyer.



FINDING YOUR WAY ROUND THE BUILDING:

There is nothing worse than coming to a place for the first time and not having a clue where you are or what to do.

We have tried to mark on the map useful information like the toilets; where to go for coffee **Foyer** and collect your kids. **Crèche** or **Kid's Church**



TIMES & DESCRIPTIONS OF SUNDAY SERVICES

As a church, we don't believe that one size fits all. We are all made in the image of God and also made unique. We try to reflect this in the services we offer.

SUNDAY MORNINGS

11.00am each Sunday is our largest service.

Normally this service lasts about one and a half hours. It caters for all age groups with special provision for Babies; Children and Youth. We usually start all together and then after about 15/20 minutes the Children and Youth go to their groups. If you would

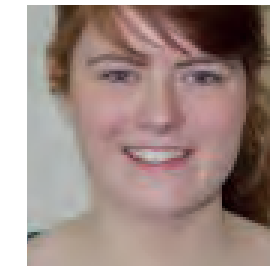
like your child to join in, then do please follow the crowd when the children and youth leave. Or you could ask a Steward. [See Map for Directions] The Kids Church Leader is called Becky Williams and the Youth Leader is Lottie Doyle- Edwards.

All our Children's and Youth Workers have been DBS checked. We are committed to making this church a safe place for you and your family.

Once a month we all stay together in what we call our 'All Join In' Service. This is usually the first Sunday of the month. This service does what it says on the tin we participate together and learn from one another exploring the theme for the week in interactive ways. Three times a year the Guides and Scouts join us for Parade Services.



Becky Williams



Lottie Doyle- Edwards



All Morning Services are followed by the chance to stay for refreshments in the foyer.

EVENING SERVICES.

These are very different to the mornings and take on a different shape and flavour depending on which week of the month it is:

First Sunday is 6.00pm Healing Communion. This is a gentle, low key and non-threatening service where we come together to pray for those who need a touch from God either personally or for those we know.

Second Sunday & Third Sunday: Whilst the evening services on these Sundays always start at 6.00pm they tend to vary. We can have a Contemporary Service that has a modern feel. A Classic Service that has a more traditional feel. Or Church 'n Chat that picks up on a life-related issue and explores it in an informal way.

About three times a year we hold a Songs of Praise Service. This is held at 5.00pm and is followed by High Tea. It is traditional in its feel.

Fourth Sunday we usually hold Café or Pub Church. This event starts at 7.00pm it usually has a guest musician and is very informal. [See the News Sheet for details.]

GETTING INVOLVED:

We are a church that is convinced that everyone has a part to play and is called to play their part. If you have reached the point where you would like to find out how you might take part then please do have a word with one of the ministers who would be very pleased to help you.

NEXT STEPS INTO WELCOME

As a church, we are acutely aware of how difficult it is to become established as a member of the congregation and part of the family. We also know the difference it makes when you feel like you belong. This is so important to us that one of our church leaders has been given responsibility for developing this part of the life of the church. So far, we have developed 5 things that are intended to help you feel a part of the church:

- **WELCOME DESK** Every Sunday after the service a team are available at the Welcome Desk in the Foyer to answer any questions you may have and offer you any help you may need.
- **WELCOME LUNCH** Once a term we hold a special lunch where we bring together those who are new so that they can get to know each other and can hear a little more about the church and its vision.
- **LUNCH OUT** We recognise that for some people Sunday can be a lonely time. Whilst many leave church and go home to family, for some they return to an empty house. Once a month, usually on the first Sunday, we have created the opportunity where those that would like to, can go out for lunch together and get to know one another. If this is something you would like to do ask for details at the Welcome Desk.
- **WHAT'S ON** We are an active, outward looking church that is committed to doing what we can to make a difference in our community. We are always starting new projects; running new courses and holding new events. What's On is a booklet that we keep up to date that contains all the things that we are doing as a church. If you would like a copy do please ask at the Welcome Desk.

CONTACT US

THERE ARE SEVERAL WAYS THAT YOU CAN CONTACT US...

WEBSITE

www.albanyroadbaptist.org

EMAIL

info@albanyroadbaptist.org

PHONE

029 20 493 430 029 20 493 708
(Church Office) (Roger & Sue Irwin)

FACEBOOK

Albany Road Baptist
Members and Regulars